

ADSL - CheckLine (HIGATE Plus)

-

< : KT ADSL - VAN (HiGate - Plus) .
, ADSL - VAN (KICC) .>
"www.ktcheckline.co.kr"

1.

2.

2004 - 09 - 09

()

1.

1

1.

2. HiGate-Plus ADSL-VAN 가 가 FTP

HiGate-Plus ADSL-VAN

FTP(file transfer protocol)

HiGate-Plus ADSL-VAN FTP , PC가 FTP

HiGate-Plus ADSL-VAN FTP

(Disable)

FTP

(Enable)

2

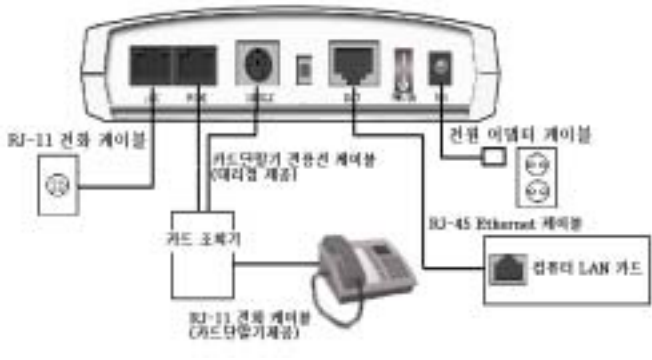
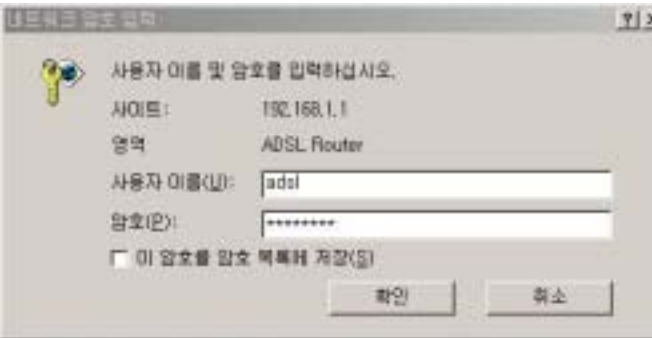
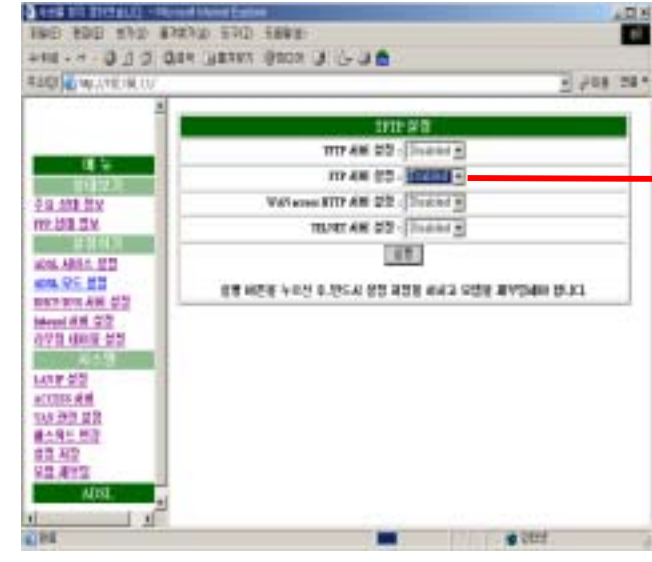
PC HiGate-Plus ADSL-VAN

LAN

3 :

2.

1 .

<p>1. PC</p> 	<p>1) PC IP "192.168.1.2 ~254" IP 2) PC 3) LAN PC LED</p>
<p>2.</p> 	<p>1) 2) URL http://192.168.1.1 3) : adsl 4) : megapass 5) !</p>
<p>3. ACCESS</p> 	<p>1) 2) "ACCESS " FTP "Enabled" ! 2 가</p>

4.



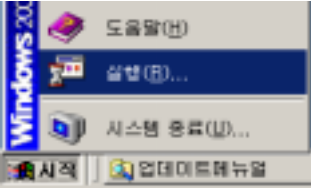


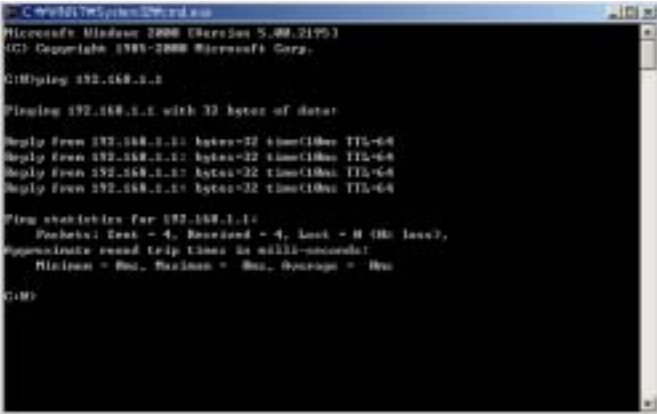
- 1)
 - 2)
- !

5.



- 1)
- 2)

2

<p>1.</p> 	<p>1) 2) 3)</p> <p>! OS</p>
<p>2. cmd command</p> 	<p>1) cmd command</p> <p>! Win95,98 command</p>
<p>3. ipconfig</p> 	<p>1) ipconfig Enter</p> <p>2) IP Address 가 “192.168.1.x “</p> <p>! x 2 253</p>
<p>4. ping</p> 	<p>1) ping 192.168.1.1 Enter</p> <p>2) Ping</p>

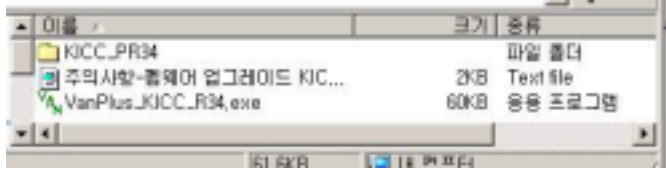
3 :

< >

PC

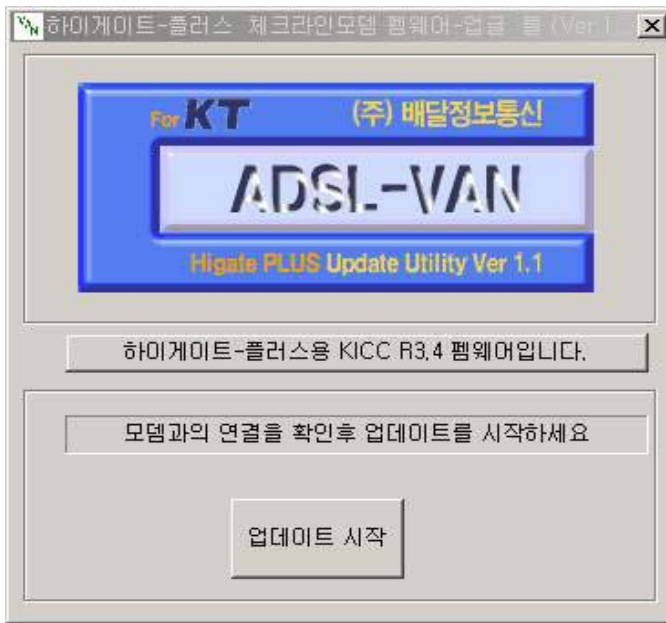
OFF

1. Update utility



- 1) Update
- 2) VanPlus_vvv_Rxx.exe

2.

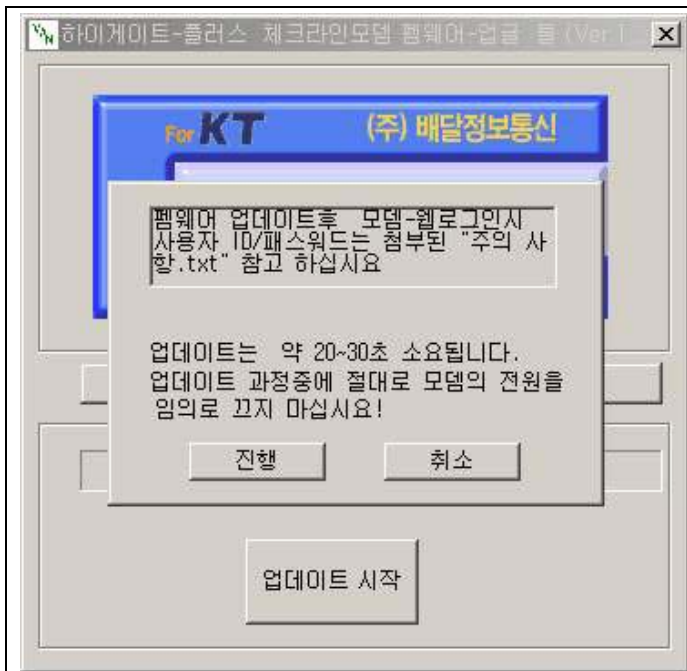


Update 가 가

“ ”

3

- 1)
- 25~35 가
-
-



- 1)
- 2)

4. Update



5. Update



1)

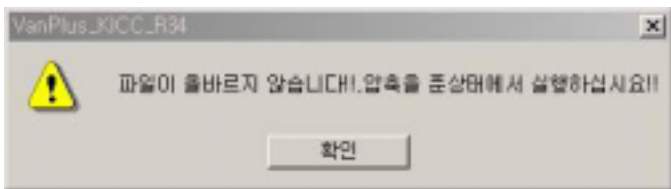
3. ACCESS

1

Update가



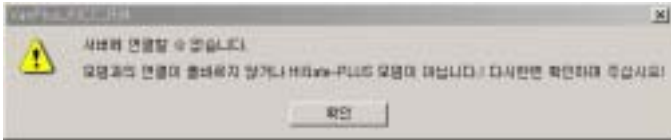
1



가

HIGATE Plus

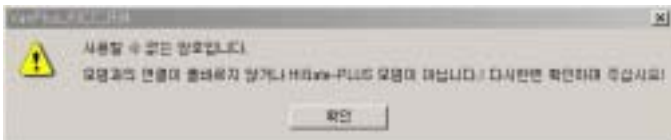
2



PC

- 1) < LAN Off/ON 가 20 가 LAN LED !!>
- 2) < FTP 가 > FTP
- 3) PC < >

3



(Reset)