

HIGATE-*Plus* (ADSL-VAN)
-가 ()

1.00

2004/09/09

()

1.

2.

3.

3.1

3.2

3.3 VAN

3.4

3.4.1 IP

3.4.1.1 DSLAM [PPPoE/PPPoA]

3.4.1.2 IP-DSLAM (DHCP)

3.4.2 IP

“ My-IP ” , “ Multi-IP ”

HiGate-Plus (ADSL-VAN) 가 ()

3.5

1.

가. HiGate-Plus 가 “KICC()”
[3.4 VAN]

. VAN (Upgrade)

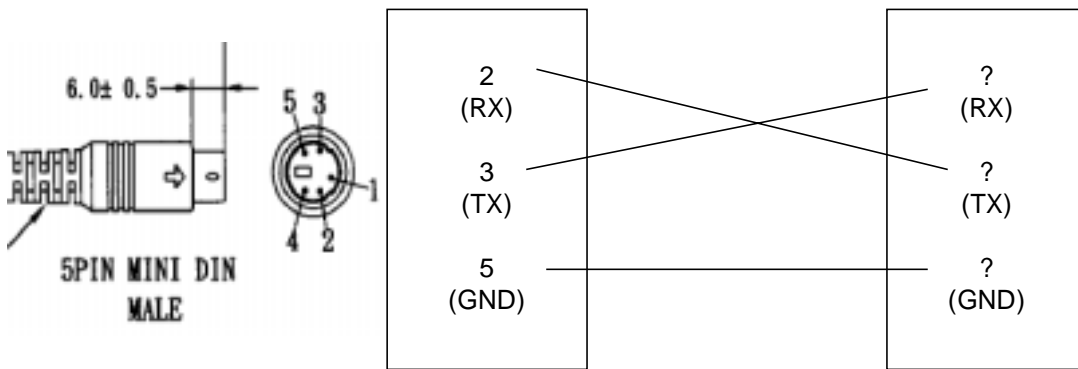
. www.ktcheckline.co.kr

VAN

“ HiGate-Plus ”

VAN

VAN



HiGate-II

(VAN

)

HiGate-Plus

Baud Rate	9600 Bps	
Data Bits	8 Bits	
Stop Bits	1	
Parity	NO	
Flow Control	NO	

[HiGate-Plus]

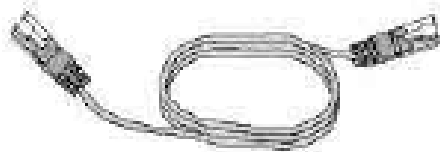
VAN

2.

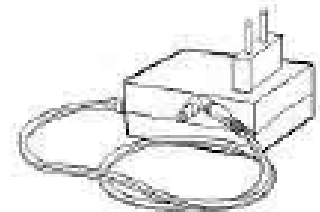
-
- Ethernet
-
-
-



모뎀부재



Ethernet 케이블



전원 어댑터



사용설명서



전화 케이블

3.

1.

2.

3. VAN

4.

4.1 IP

4.1.1 DSLAM [PPPoE/PPPoA]

4.1.2 IP-DSLAM (DHCP)

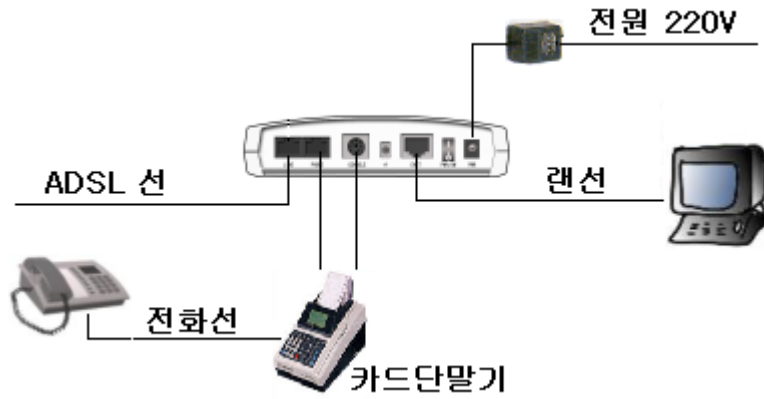
4.2 IP

HiGate-Plus (ADSL-VAN) 가 ()

5.

HIGATE Plus

1.



2.



2.1

	LED	
(PWR)	LED	ADSL LED가 , LED
(LAN)	LAN LED	Ethernet (PC ADSL) .
(DATA)	IP /	KT (LINK) 가 . IP , IP , IP
KT (LNK)	ADSL LED	ADSL (ADSL) .

2.2

LINE	ADSL	
PHONE		
CONSOLE		
ENET	Ethernet	LAN PC LAN
PWR/SW		
DC5V 2A		ADSL (AC 220/18V) .
RESET		

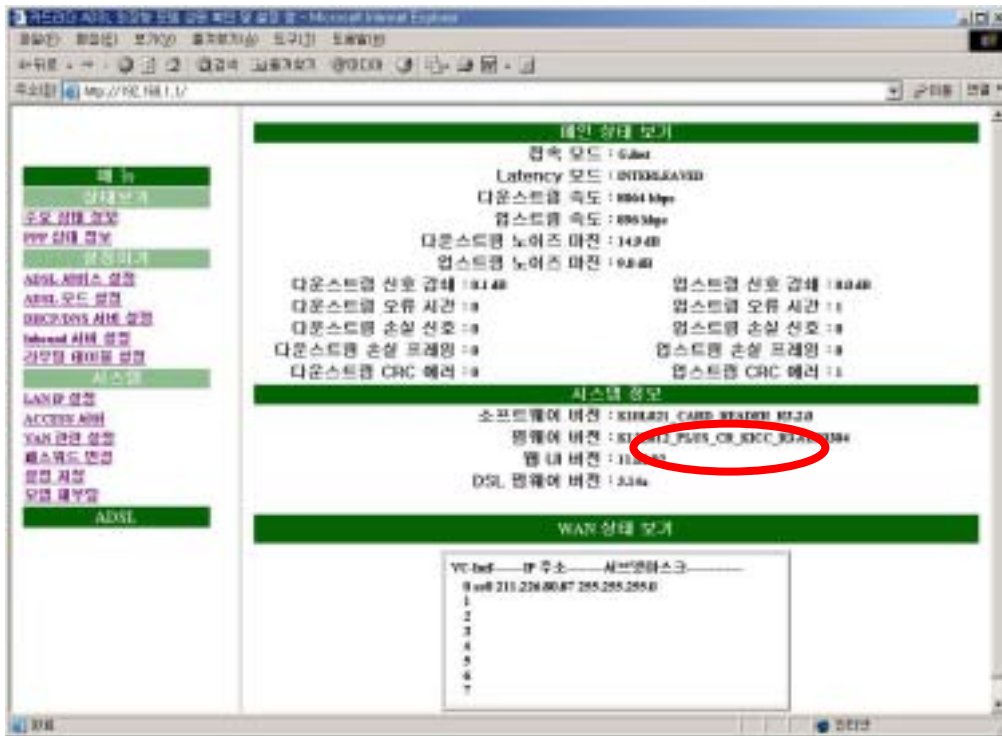
3. VAN

STEP 1.

- 1)
- 2) URL <http://192.168.1.1>
- 3) : adsl
- 4) : megapass
- 5)

STEP 2.

- 1) [K012Looo_PLUS_CR_VVV_R.X.X.xxxxx]
ooo : H/W Revision
VVV : VAN [: KICC -
NICE -]
R.X.X : []



4.

4.1.1 DSLAM [PPPoE/PPPoA]

STEP 1.

ADSL

1) PVC

[HiGate-Plus PPPoE]

2) PPPoE

3) ADSL

!!

	Auto	
Disconnect Time	0	
PPP Reconnect on WAN Access	Enable	
PPPoE	Disable	

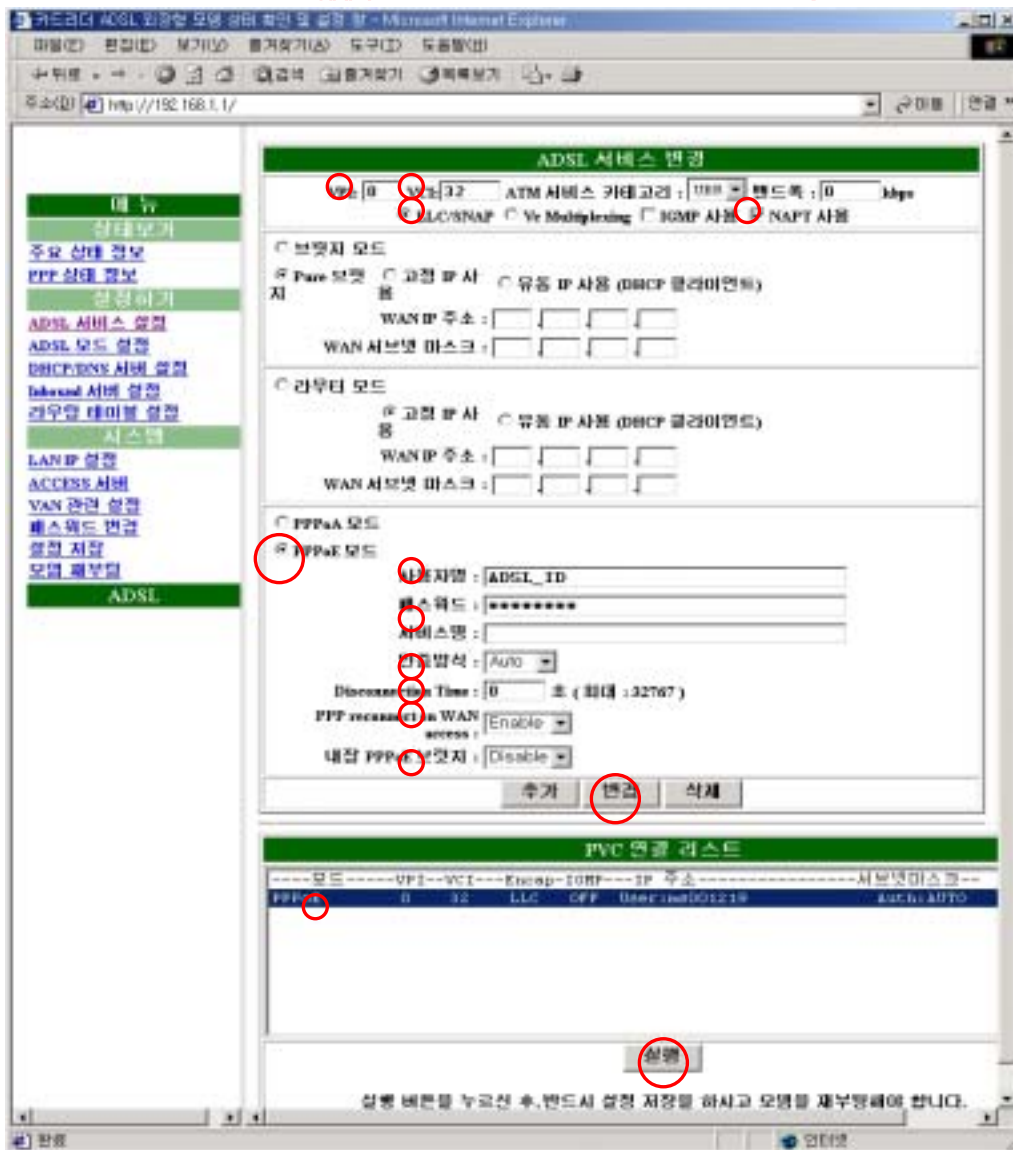
4)

(가 가)

5)

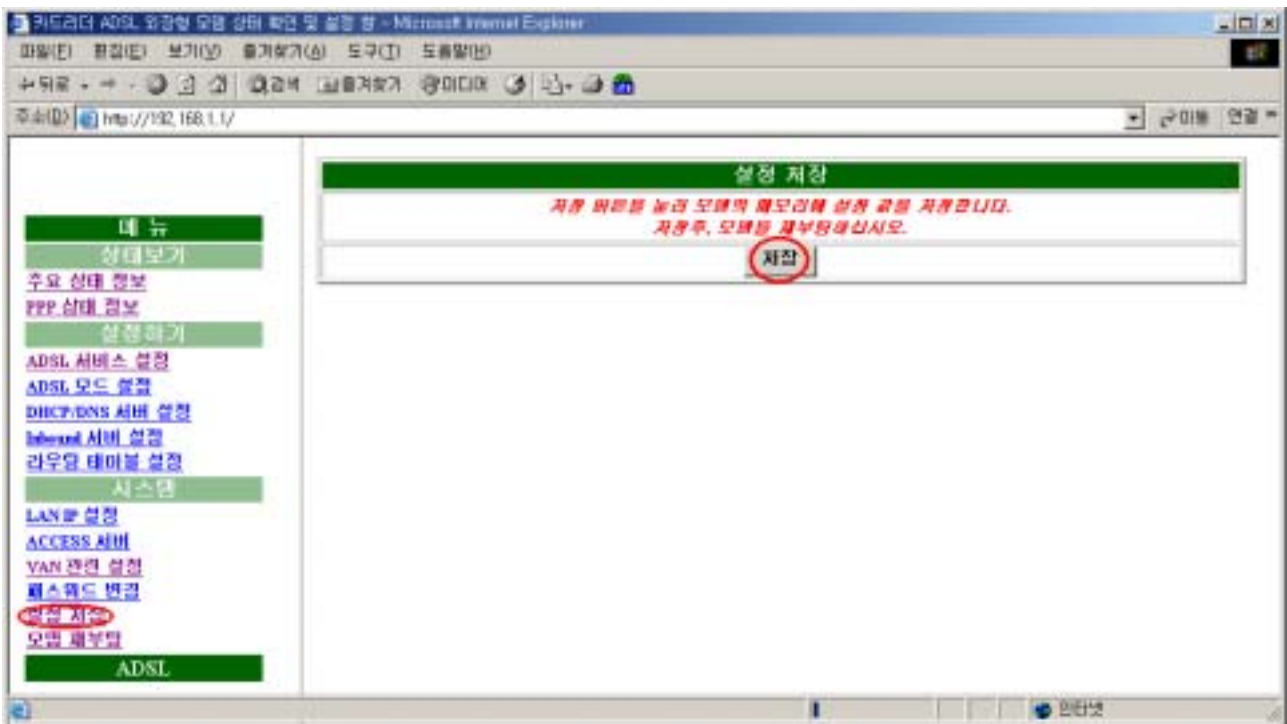
! VPI/VC1 !

DSLAM
NAPT



STEP 2.

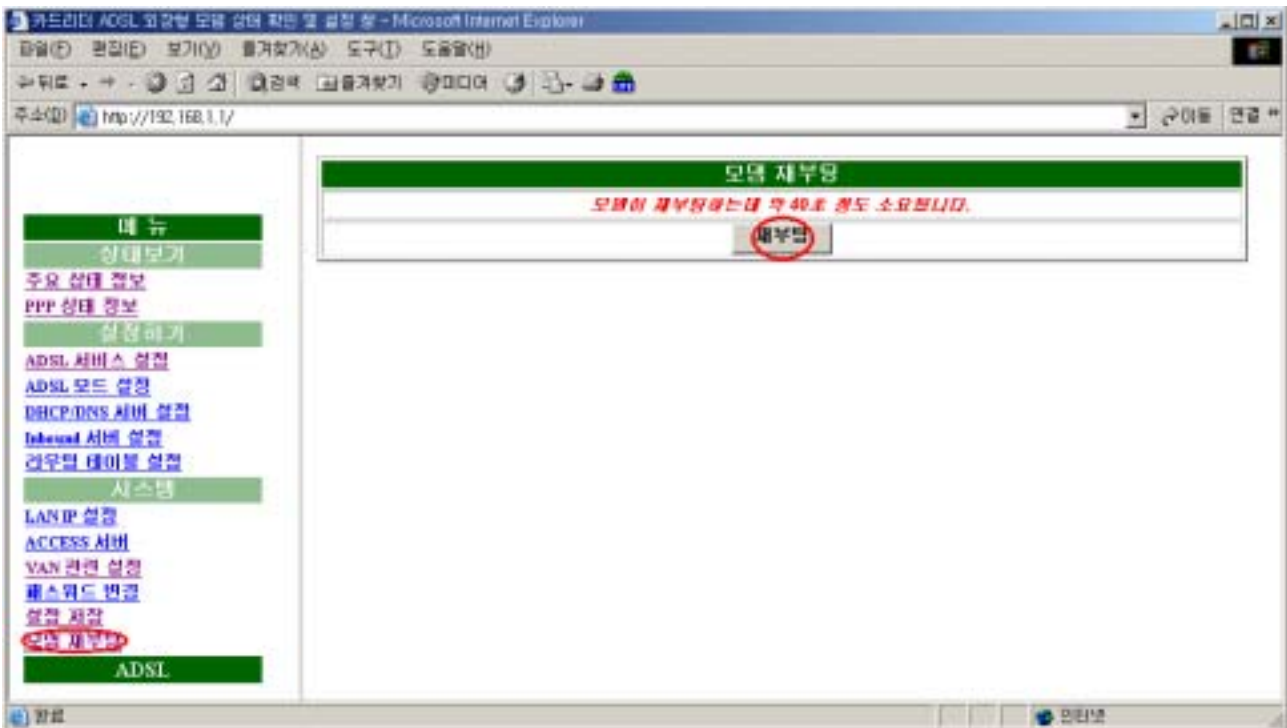
- 1)
- 2)



STEP 3.

- 1)
- 2)
- 3)

ADSL



4.1.2 IP-DSLAM [DHCP]

STEP 1

- ADSL
- 1) PVC [HiGate-Plus PPPoE]
 - 2) , IP
 - 3) VPI/VCI
 - 4) LLC/SNAP
 - 5) NAPT (PC)
 - 6) (가 가)
 - 7) ! VPI/VCI DSLAM ! NAPT



STEP 4.

DSLAM [PPPoE/PPPoA]

STEP 5.

DSLAM [PPPoE/PPPoA]



5.

1)

2)

2-1)PVC

2-2)

IP	DSLAM (PPPoE/PPPoA)	PPPoE/PPPoA VPI/VCI IP : User: ID가 : Auto Disconnect Time : 0 PPP Reconnect on WAN Access : Enable PPPoE : Disable
	IP-DSLAM (DHCP)	2684R Bridge VPI/VCI IP : DHCP Client
IP	My-IP	2684B Bridge VPI/VCI IP / Routing LAN IP (IP)
	Multi-IP	2684B Router VPI/VCI IP / Routing LAN IP (IP)
		PC NAPT 가 (ADSL)

